



MOVING FORWARD >>>

CONTENTS

Message from the CEO 1

“In 2022 we launched a bold and ambitious new strategic vision to dramatically increase our capacity to celebrate and support millions of LGBTQ+ older people in every part of the U.S. and beyond.”

LOOKING FOWARD 2

SAGE’s Bold New Strategic Direction Impacting LGBTQ+ Elders Everywhere 3

SAGE’s goal is to build sustainable models for essential programs to control our destinies and take care of our own.

SAGE by the Numbers 4

National Advocacy 6

Advocacy in New York 8

Services for LGBTQ+ Elders 9

SAGE’s Diversity, Equity, and Inclusion Work 12

Working in Solidarity with Advocates Worldwide 14

PAYING IT FORWARD 16

Our Supporters 17

SAGE thanks our supporters who have made an investment—of money, time or talent—in our work.

Financials 19

Statements of Financial Position, Cash Flows and Activities for the 2022 fiscal year.

2022 BOARD OF DIRECTORS

EXECUTIVE COMMITTEE

Ruth Eisenberg
Co-Chair

Dr. Kevin Williams
Co-Chair

Bruce Lederman
Treasurer

Scott L. Bennett
Secretary

Barbara Peda
Development Committee Chair

Cindy Rizzo
Diversity, Equity & Inclusion Chair

Mark Sexton
Strategic Planning Committee Co-Chair

MEMBERS AT LARGE

Staci Alexander

Ian Lee Brown

Darrell Burks

Lorraine Carlson

Jonathan Carter

Rahul Culas

David de Figueiredo

Jeffrey Erdman

Dawn Fischer

Carlene Jadusingh (CJ)

Roy Jimenez

Zak Karim

Molly Lenore

Philip Lumpkin

Laurie Peter

Mady Schuman

Linda Scott

Elliott Sernel

Teresa Verges

Andrew Werner

Sue Wilder

Board List for January 1, 2022 – December 31, 2022

MESSAGE FROM THE CEO



In 2022 we launched a bold and ambitious new strategic vision to dramatically increase our capacity to celebrate and support millions of LGBTQ+ older people in every part of the U.S. and beyond.

Dear Friends,

2022 was a year of real challenges, but also of significant progress and robust resilience. This resilience has never been more critical as we've faced a highly organized onslaught of anti-LGBTQ+ attacks and legislative proposals, many of which target vulnerable transgender youth. Last year alone, more than 315 anti-LGBTQ+ equality bills were introduced in state legislatures, with 29 bills signed into law. These attacks mirror the same playbook we saw decades ago to stop us from marrying in states nationwide. Yet, despite these struggles, SAGE's work on behalf of our community's elders—inspired by the pioneering generations whom we proudly serve—has continued to progress and thrive.

I'm excited that 2022 also marked a turning point for SAGE as we launched a bold and ambitious new strategic vision to dramatically increase our capacity to celebrate and support millions of LGBTQ+ older people in every part of the U.S. and beyond. No matter what challenges we may face as a community and a country, SAGE is fighting smart today while looking ahead to tomorrow, to ensure that every LGBTQ+ elder can age with the dignity and respect they deserve.

Our 2022 annual report highlights SAGE's remarkable array of services, advocacy, training, and other accomplishments—as well as the passionate and diverse communities our elders continue to build through their leadership.

LGBTQ+ elders are our motivation, leaders, and inspiration for a reason. They bravely forged our past, they lend us their strength in the present, and they inspire us to keep pushing for a better future. Only they know what it truly means to transform the aging experience for LGBTQ+ people as we look ahead. That's why SAGE will amplify the voices of our elders, follow their examples, and support our community's pioneers through thick and thin.

We're proud to share this report with you, highlighting the work SAGE has advanced throughout 2022 with and on behalf of the millions of LGBTQ+ older people we proudly serve.

Onward!

A handwritten signature in black ink that reads "Michael Adams". The signature is fluid and cursive, written in a professional but personal style.

Michael Adams
SAGE CEO

LOOKING FORWARD



SAGE's Bold New Strategic Direction Impacting LGBTQ+ Elders Everywhere

Building on SAGE's extraordinary 40+-year foundation of ever-expanding services and advocacy with, by, and for LGBTQ+ elders, we stepped into momentous new territory in 2022.

At our 2022 SAGE Awards and Gala in October, we unveiled our ambitious new strategic direction—a five-year plan with a ten-year vision to impact LGBTQ+ elders across the U.S. and globally.

This bold and visionary new roadmap will enable SAGE to reach and support many more LGBTQ+ older people, with an emphasis on historically marginalized elders who are Black, Indigenous, or People of Color (BIPOC), transgender and gender non-binary (TGNB), and among the almost one-third of LGBTQ+ elders who live in rural areas. SAGE will continue our local, state, and federal advocacy to ensure that LGBTQ+ elders get the supports and systems they need to thrive.

Under this transformational new plan, SAGE is evolving to increase our impact by offering more programs and services, expanding our reach, and reimagining how we operate. SAGE is creating two new special divisions to focus on our traditional service programs as well as our emerging portfolio of cutting-edge, mission-based social enterprises. We are also expanding with a model for flexible partnerships, SAGECollab, and creating a new SAGE Center of Excellence. SAGE is striving for more representation and equity by including more LGBTQ+ elders from all communities. Our goal is to build sustainable models for essential programs to control our destinies and take care of our own.

As we officially launch this exciting new strategic direction in 2023, our mission remains proudly the same. SAGE is committed to ensuring that every member of our community not only survives but thrives as they age.

>>> **Learn more about our strategic direction at sageusa.org/lookingforward.**





SAGE BY THE NUMBERS NATIONAL



SAGE ADVOCACY

SAGE's state-level advocacy efforts

advanced progress for LGBTQ+ elders in New York, Arizona, Florida, Indiana, Mississippi, North Carolina, North Dakota, Ohio, Oklahoma, Texas, Vermont, and Wisconsin.

20 new LGBTQ+ elder storytellers

trained to share their perspectives with lawmakers.



30 elder storytellers spoke out at advocacy events.

190 calls and **953** comments sent to elected representatives and decision-makers on policies affecting LGBTQ+ elders.

1,737 individuals across the U.S. raised their voices for justice and equity through public comment periods and other actions.

Learn more about SAGE's 2022 advocacy successes on page 6.



SAGECONNECT

3,500 calls placed by program volunteers to LGBTQ+ elders with SAGEConnect pairs connecting for **2,600** hours of active phone time.



SAGE IN THE SPOTLIGHT

SAGE media coverage attained unprecedented levels in 2022, amplifying the perspectives, stories, and policy priorities of LGBTQ+ elders via

1.5 billion media impressions!



SAGE NATIONAL LGBTQ+ ELDER HOTLINE

7,000 calls answered by the SAGE Hotline in 2022.



SAGECENTS

1,116 new users joined SAGECents in 2022.



NATIONAL LGBTQ+ ELDER HOUSING INITIATIVE

56 LGBTQ+ affirming housing developments across the nation in various stages of development and funding were provided technical assistance, totaling more than **2,500** housing units.

8 training courses were developed and launched for housing developers, offered in English and Spanish.

164 training courses completed.



SAGECARE

45,783 professional caregivers in LGBTQ+ cultural competency.



Trainees came from **574** organizations across **39** states, with **306** of those agencies earning credentials and **235,578** LGBTQ+ elders receiving competent care and services annually. To date, SAGECare has trained providers in all **50** states and Washington, D.C.



SAGE BY THE NUMBERS NEW YORK CITY & SOUTH FLORIDA



NYC SAGE CENTERS

Going strong—virtually and in-person!



**SAGE Center Bronx
at Crotona Pride House**

SAGE Center Harlem

Edie Windsor SAGE Center

**SAGE Center Brooklyn
at Stonewall House**

**SAGE Pride Center
of Staten Island**

In 2022 our NYC SAGE Centers:

130,000+ touches across the spectrum of services SAGE provides where we supported LGBTQ+ elders.

46,875+ nutritious “Grab n Go” meals provided to combat food insecurity—more than double the previous year.

12,000 vibrant programs and events produced including movie nights, book clubs, meditation, Tai Chi, language classes, and drawing classes.

5,725 information and referral connections to key services, including mental health support, financial wellness information, and housing resources.



SAGEPOSITIVE

920 older people living with/affected by HIV who participated in **34 events** in 2022. Over **7 years**, these programs have served **3,120 participants**.



SAGEVETS

27 events attended by **400+** people to support LGBTQ+ veterans across New York State.



NYC FRIENDLY VISITOR PROGRAM

93 Friendly Visitors log **3,318** hours of service with LGBTQ+ elders.



“My current Friendly Visitor is **TOP OF THE LINE**. SAGE just gets better and better... Thank you SAGE—you folks have it right.”

—Roger S.



SOUTH FLORIDA FRIENDLY VISITOR PROGRAM

18 Friendly Visitors logged **140+** hours **New in 2022!** served. In addition, **11 Friends at Home** received **158 volunteer** visits and calls.



SAGE MIAMI SERVICES FOR LGBTQ+ ELDERS

New emergency financial assistance program launched in 2022!

75 connections to key resources including emergency financial assistance, mental health services, and housing.

114 contacts with Miami-based agencies that work with older people, the LGBTQ+ community, and/or low-income populations.

SAGE's NATIONAL ADVOCACY

Old and Bold: Services for All Campaign for Inclusive Aging Services

June's Pride celebrations ended on a strong note with SAGE's advocacy campaign for inclusive aging services for LGBTQ+ and HIV-positive older people in every community in the nation. We launched our **Old and Bold: Services for All** campaign to add momentum to the first-ever Presidential Executive Order to encourage better access to services and care for LGBTQ+ older people.

President Biden's Executive Order reflected SAGE's policy priorities to ensure LGBTQ+-inclusive services for elders. It specifically charges the Department of Health & Human Services with exploring new rulemaking to establish that LGBTQ+ individuals are included in the definition of populations of "greatest social need" under the Older Americans Act.



These are critical steps for protecting and supporting LGBTQ+ elders. SAGE's Old and Bold campaign works with states across the U.S. to ensure that their State Plans on Aging include LGBTQ+ and HIV-positive communities and that service providers care for our elders with the dignity and respect we deserve.

Respect for Marriage Act Becomes Law

As a part of the Freedom & Opportunity for All coalition, SAGE played a vital role in advocating for the Respect for Marriage Act (RMA), which mandates respect for the marriages of same-sex couples, independent of any potential Supreme Court decisions.

The House passed the RMA in July, and the Senate followed suit with a bipartisan majority, with President Biden signing the RMA in a historic bill-signing ceremony on the South Lawn of the White House in December 2022.



SAGE's Action Squad— Energized and Ready for Change

SAGE kicked off 2022 by launching the **Action Squad**—a community of bold, passionate advocates primed to take actions that improve the lives of LGBTQ+ elders and elevate their visibility in the policy realm. SAGE keeps Action Squad members informed of breaking news and opportunities to take action by contacting elected representatives, sharing their stories, and pushing back against anti-LGBTQ+ forces locally, regionally, and nationally. In 2022, SAGE's Action Squad



submitted comments supporting non-discrimination protections for LGBTQ+ people in healthcare, conducted

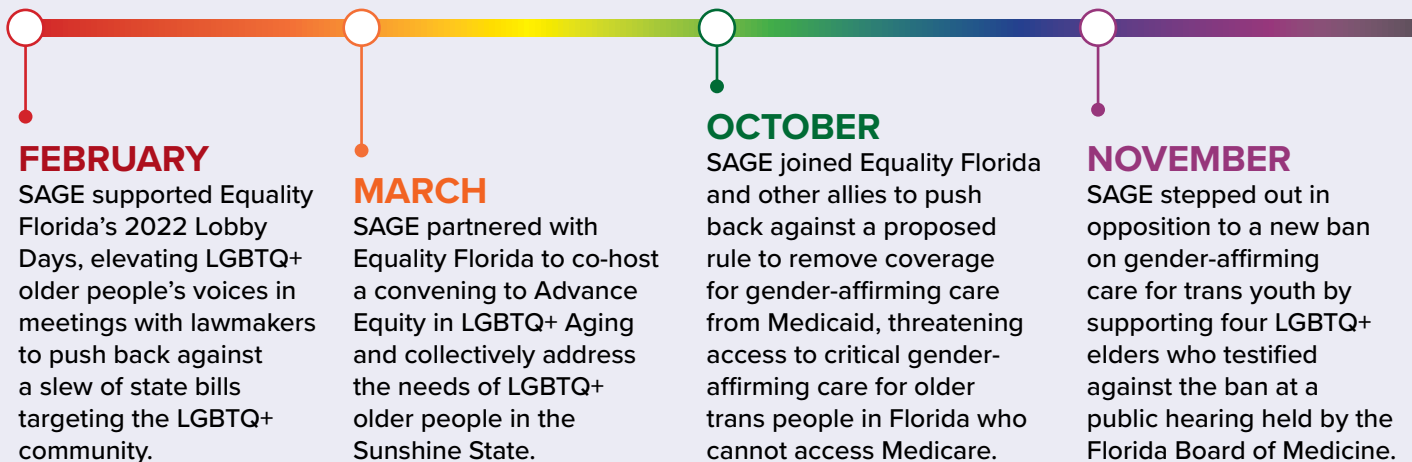


voter education, and learned how to become powerful advocates. From the spark of defiance at Stonewall, our elders remain at the forefront in the fight for equality and justice—and SAGE's Action Squad takes the journey one step further.

STANDING STRONG WITH OUR LGBTQ+ EQUALITY PARTNERS

Throughout 2022, SAGE strengthened our partnerships with local organizations focused on LGBTQ+ equality to protect our communities nationwide and refuse to be invisible.

Specifically, the wave of anti-LGBTQ+ legislation in Florida compelled us to take action alongside LGBTQ+ elders and allies. Florida's LGBTQ+ elders embody resilience in the face of adversity.



MOVING FORWARD

SAGE's ADVOCACY IN NEW YORK

New York State Delivers a Momentous Victory for LGBTQ+ Elders

SAGE celebrated a significant win during LGBTQ+ History Month when New York Governor Kathy Hochul signed a groundbreaking bill into law designating LGBTQ+ elders and older people living with HIV in New York as populations of greatest social need for the state's aging programs.

This legislation, advocated for by SAGE, ensures that programs like Meals on Wheels and other local aging services are accessible



for pioneers of the LGBTQ+ movement so that they can age within their communities. New York joins California, Pennsylvania, Washington, D.C., and Vermont in passing this model legislation.



HISTORIC NEW YORK CITY COUNCIL HEARING ON LGBTQ+ ELDERS

SAGE coordinated with the New York City Council to hold the first-ever oversight hearing on Challenges Facing LGBTQ+ Older Adults in June. SAGE staffers, SAGE participants, and multiple SAGECare providers testified at the hearing. Representatives of Mayor Adams' administration and City Council members went on record committing to addressing the unique challenges facing LGBTQ+ New Yorkers as they age.

LGBTQ+ Veterans in New York Achieve Long Overdue Rights and Benefits

On Veterans Day 2022, members of SAGEVets—SAGE's initiative to help older LGBTQ+ veterans access services and benefits—proudly marched in New York City's 103rd Annual Veterans Day Parade.

Also on Veterans Day, Governor Kathy Hochul signed a crucial bill



for LGBTQ+ veterans, sponsored and championed by State Senator Brad Hoylman-Sigal and Assemblymember Didi Barrett. The bill ensures that LGBTQ+ older veterans who were discharged due to their LGBTQ+ status and went on to become state employees have full access to state pension benefits.

For too long, LGBTQ+ service members risked their lives only to suffer in silence under deeply discriminatory military policies and were denied the benefits they earned.

MOVING FORWARD

SERVICES FOR LGBTQ+ ELDERS

SAGEConnect Turns 2, Forging Multigenerational Ties Nationwide

Our hugely popular SAGEConnect Program pairs volunteers with LGBTQ+ elders for weekly phone calls. SAGEConnect celebrated its second anniversary in 2022 by engaging new elders and volunteers nationwide.

SAGE founded this program initially as an urgent response to COVID-related isolation among LGBTQ+ elders—and it has flourished, fostering intergenerational social ties and support. Since its inception, this program has completed 5,087 calls with 972 all-time matches—totaling 205,032 call hours through December 2022.



“My SAGEConnect match is truly a joy to talk with. Having completed our 25th conversation, I feel blessed to have found him as a match. We are forming a bond that I cherish.”

—SAGEConnect volunteer based in North Carolina



SAGE's National LGBTQ+ Elder Hotline Meets Rising Demand

SAGE's Hotline continued a multi-year growth trajectory, with a massive increase in calls during 2022. By year's end, hotline respondents had answered nearly 500 calls from LGBTQ+ elders monthly, with a disproportionate number of calls coming from transgender people.

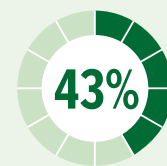
The surge in calls reflects the harmful impact of anti-LGBTQ+ legislation and political attacks. Open 24/7, SAGE's Hotline addresses multiple needs, including health-related and mental health concerns, housing and financial assistance, legal issues, and more.

SAGECENTS MARKS ITS SECOND YEAR...AND EXPANDS

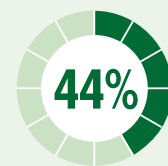
On August 14, National Financial Awareness Day, we celebrated the second anniversary of SAGECents, our personal finance app to help LGBTQ+ older people with budgeting, savings, and strategies to support their financial wellness. By the end of 2022, the program grew to more than 1,200 users in all 50 states, Washington D.C., and Puerto Rico.

SAGECents significantly improves LGBTQ+ elders' finances. In 2022, 43% of users increased their credit score, 44% increased their savings, 54% reduced their debt, and 41% improved their general financial well-being.

Building off this success, SAGE is accelerating to increase our reach in 2023 via multiple channels, including SAGECents in Spanish.



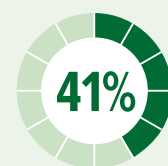
INCREASED CREDIT SCORE



INCREASED SAVINGS



REDUCED DEBT



IMPROVED \$\$ WELL-BEING

Moving Forward with SAGECollab

A New Model for Serving LGBTQ+ Elders Nationwide

In 2022, SAGE and our SAGENet national affiliate network leaders met in Washington, D.C. to discuss the development of a new, more flexible collaboration model.

Our new partnership approach will open up more opportunities for how organizations partner with SAGE. It will remove barriers to collaboration, promote creativity, and increase the inclusion of diverse organizations serving LGBTQ+ elders—particularly BIPOC, transgender and non-binary, and rural elders.



SPOTLIGHTING THE LGBTQ+ AGING EXPERIENCE IN THE MEDIA

SAGE works with the media to build awareness about LGBTQ+ aging across all communities while showcasing the resilience and vibrancy of LGBTQ+ older people.

In 2022, SAGE garnered compelling coverage with media placements in print and digital publications and media outlets, including The New York Times, USA Today, AP, Vox, Curbed, ABC News, Business Insider, and many others. View all of our current and past media hits in our newsroom: sageusa.org/newsroom.



Bringing LGBTQ+ Elders from the Margins into the Spotlight

“Age My Way” Campaign



In May, SAGE celebrated Older Americans Month with a campaign highlighting the many ways older people can be involved with their communities

and eliciting feedback from older LGBTQ+ community members on what “Aging My Way” means to them.



“Aging my way means freedom from stigma and fear. Ageism, racism, and homophobia do not stop me from doing what I want, saying what I want, and feeling how I feel.”

—SAGEr Malcolm Reid

SAGE Elders Model SAXX Underwear

SAGE teamed up with cutting-edge underwear company SAXX to break ageist stereotypes about sexiness. SAXX commissioned a queer artist to design their Pride underwear, modeled by three SAGE elders! SAXX put our elders front and center in its Pride marketing campaign, with a portion of the sales donated to SAGE.



SAGE New York Highlights

SAGE NYC Centers Return to Full Capacity and Launch New Programs

By spring 2022, SAGE resumed full-capacity in-person programming at our five NYC SAGE Centers after two years of primarily virtual activities due to the COVID-19 pandemic. Our SAGE Centers welcomed back elders in full force for in-person programming—while sustaining our popular virtual activities.

We also launched food pantry programs at all our Centers in 2022. Operated in collaboration with Love Wins Food Pantry and New York Common Pantry, the pantries provide fresh produce and dry goods to LGBTQ+ elders struggling with food insecurity.



“I feel like I’m in my living room. I like to be around and talk to people. I feel like I’m around family.”

—Ruth-Ann B., SAGE participant

SAGE’s intergenerational work also took a dynamic step forward when SAGE Center Bronx at Crotona Pride House launched **SAGE Youth**. This work-readiness internship program places graduates from Destination Tomorrow’s Career Readiness program in intern positions at SAGE Center Bronx. This program benefits younger and older LGBTQ+ people alike. Young people gain crucial career experience and elders form meaningful bonds with younger members of our community.

FLORIDA HIGHLIGHTS: SAGE WORKING IN THE SUNSHINE STATE

New in 2022!

We launched our new **SAGE Miami Services for LGBTQ+ Elders** in October 2022—providing financial and ancillary support for older LGBTQ+ people in urgent need. While focusing heavily on emergency financial support, SAGE’s Miami team also offers a range of services, including enrollment in benefits, housing assistance, food and nutrition support, long-term care planning, and referrals to other vital services. The program also provides opportunities for social connection and companionship.

Also in South Florida, **SAGE’s Friendly Visitor Program** in Fort Lauderdale continued to grow throughout 2022. The Friendly Visitor Program provides volunteers to help LGBTQ+ older people with companionship, errands, meals, medications, and more.



MOVING FORWARD

SAGE'S DIVERSITY, EQUITY, AND INCLUSION WORK

The visionary activists who founded the LGBTQ+ rights movement—now our elders—from the start, fought for a fully equitable and inclusive world. SAGE honors their fight and extended that legacy throughout 2022. We worked hard to expand equity for all LGBTQ+ elders, while also investing in diversity, equity, and inclusion (DEI) policies and practices internally.

In 2022, we took SAGE's DEI work to new levels, including recent efforts to shift resources and power to historically marginalized communities, long-term engagement in intersectional work, and ongoing actions that infuse anti-racism as a core organizational value at SAGE.



Diverse Elders Coalition

SAGE is the fiscal sponsor and founding member of the **Diverse Elders Coalition**, a collaboration among national organizations that work collectively to improve the quality of life of older adults who are American Indian and Alaska Native; Asian American, Pacific Islander, and Native Hawaiian; Black and African American; Hispanic and Latinx; and LGBTQ+. In 2022 the Coalition expanded its training and advocacy efforts on behalf of diverse elders across the country. In addition to SAGE, the other members of the Diverse Elders Coalition are the National Asian Pacific Center on Aging, National Black Center on Aging, National Hispanic Council on Aging, National Indian Council on Aging, and the Southeast Asian Resource Action Center.



“Marsha knew that if she could get that door open and everyone could see who she was, everyone else would be fine, & she's right: The best gift that you can give any trans girl in this world is living your life and being who you are, that's your greatest gift to her.”



“Trans folks, you are included. We care about you, and we're working towards helping you because we realize how important you have been to our community.”

TRANS LEGACY CAMPAIGN

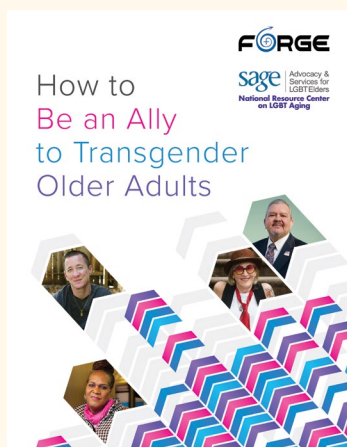
In honor of Pride Month, SAGE launched our **Trans Legacy Campaign** to celebrate the vibrancy and resiliency of older transgender people and increase the representation of transgender elders amidst the community's ongoing struggles. In collaboration with Trans Equality Consulting and photographers viento izquierdo ugaz and Oscar Diaz, SAGE launched a virtual gallery and social media campaign displaying these images of trans elders, as well as hosting a gallery show at SAGE Center Brooklyn at Stonewall House.

Transferring Resources

SAGE’s anti-racism framework calls for transferring resources and power to marginalized communities. In 2022, SAGE partnered with GRIOT Circle—a Brooklyn-based organization dedicated to building a just and abundant life for all LGBTQ+ elders of color—to increase the resources supporting GRIOT’s work. GRIOT has historically been under-resourced because of structural inequities in public funding for elder services in New York City. Our two organizations successfully joined forces to convince New



York City Council to reallocate \$300,000 from an existing LGBTQ+ elder services initiative to support GRIOT’s programs.



SAGE’S NATIONAL RESOURCE CENTER ON LGBTQ+ AGING FOCUSES ON DEI

SAGE’s National Resource Center on LGBTQ+ Aging (NRC) continued to center DEI in its work in 2022 by developing new resources supporting older transgender adults and LGBTQ+ elders residing in rural communities. The NRC partnered with FORGE on *How to be an Ally to Transgender Older Adults*—a toolkit to assist service providers and community members with education towards allyship supporting older transgender people. See all resources at www.lgbtagingcenter.org.

Center of Excellence + Equity and Innovation Lab

SAGE has built extensive expertise on LGBTQ+ aging issues during its 40+ years of working with LGBTQ+ elders. In 2022, we created **SAGE’s Center of Excellence** to harness this deep bench of knowledge to improve the field of LGBTQ+ aging worldwide and inform our work.

SAGE’s Center of Excellence is committed to improving the understanding of LGBTQ+ aging and the intersectionality, resiliencies, and unique challenges of aging as an LGBTQ+ person. This includes increasing participation in mainstream research to support LGBTQ+ elder visibility; building a body of research focused on LGBTQ+ aging through partnerships, funding, and

commissioned studies; transferring resources and information to historically marginalized communities to support equity in the field; and advocating for the collection of sexual orientation and gender identity data wherever possible to promote visibility and inclusion.



In 2022 the Center of Excellence launched SAGE’s **Equity Innovation Lab**, which makes funding and technical

assistance available to projects independent of SAGE that are community-based and focused on addressing the unique needs of LGBTQ+ elders of color, TGNB, and LGBTQ+ older people living in rural areas.

MOVING FORWARD

WORKING IN SOLIDARITY WITH ADVOCATES WORLDWIDE

SAGE's international work continued to grow throughout 2022. This included working with partners in Central America and South Asia to cultivate country-based data collection, documentation, and publications that will lead to a better understanding of the needs of LGBTQ+ older people in those regions. SAGE also supports civil society organizations that serve and empower LGBTQ+ elders and advocates for national policy reform agendas prioritizing discrimination protections and health equity for LGBTQ+ elders.

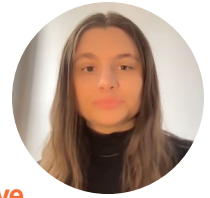
SAGE and Williams Institute Collaborate on International Research

In 2022, SAGE partnered with the Williams Institute at UCLA to make its **Global Small Grants Program** LGBTQ+-inclusive by funding three grants for researchers focused on LGBTI aging in Global South countries. One funded project will examine violence against LGBTQ+ elders in Brazil, reporting on the Brazilian health system on the impact of homophobia and transphobia on elders' quality of life.

Another is a cross-national project to collaborate and develop trans-affirming elder care services in Indonesia and Malaysia. The third project looks to understand kinship in the older LGB population of urban India. This multi-year initiative is an essential first step toward addressing the critical lack of research and data on older LGBTI people in the Global South.



“We at SAGE honor the legacy of LGBTI older people who—despite facing generations of grave injustice at the hands of their own governments and wider society—have made and continue to make meaningful contributions to our communities as the pioneers in movements for justice and through demonstrating resilience and care for one another, outside of institutionalized structures that have so often excluded them.”



—Hannah Yore,
International Program Officer at SAGE

Global LGBTQ+ Aging Network



Hello, my name is Carolia Campos.

In partnership with OutRight International, Mitini Nepal, EnGendeRights (Philippines), CIPAC (Centro de Investigación y Promoción Para America

Central de Derechos Humanos) (Costa Rica), and grassroots organizers in El Salvador, SAGE continued to advance the work of **The LGBTI Elders Advancing Initiative** throughout 2022. This multi-year initiative aims to expand human rights protections and social and economic inclusion for LGBTQ+ older people in Central America and South Asia, with a particular focus on Costa Rica, El Salvador, Nepal and the Philippines.



“The LGBTI Elders Advancing Initiative” is the first program at SAGE specifically designed to be intersex-inclusive.

“Intersex” (I) is an umbrella term used to describe people born with sex traits that do not fit binary medical definitions of male or female sexual or reproductive anatomy. Intersex populations are born with these differences in sex traits or may develop them during childhood.



On October 17, 2022, SAGE hosted our annual Awards and Gala at Cipriani Wall Street in NYC! We proudly announced SAGE’s new strategic plan, which is rooted in our core values and commitment to diversity, equity, and inclusion. SAGE presented **Justice Rosalyn Richter** with the Paula Ettelbrick Community Service Award, **Brent Miller** of Procter & Gamble with the Jack Watters Corporate Advocate Award, **Gilead Sciences** with the Corporate Leadership Award. We also honored trans trailblazer, “Mama” Gloria Allen, posthumously, with the Joyce Warshow Lifetime Achievement Award. New York City Council Member **Crystal Hudson** provided inspiring opening remarks for the night’s festivities.



SAGE constituent and Stonewall House resident, **Diedra Nottingham** (pictured above) declared, “I am not alone. I am not invisible. And SAGE helps me get my message out into the world. We need to support and to uplift our older community—especially Black and brown communities and the trans community.”

PAYING IT FORWARD



Foundations

\$250,000+

Conrad N. Hilton Foundation

The Harry and Jeanette Weinberg Foundation

\$100,000 – 249,999

Archstone Foundation

Evelyn and Walter Haas, Jr. Fund

Evercore Foundation

Gill Foundation

Jewish Federation of North America

New York Community Trust

RRF Foundation for Aging

The Eisner Foundation

The Pfizer Foundation

Tikkun Olam Foundation, Inc.

Wellspring Philanthropic Fund

\$50,000 – 99,999

AARP Foundation

Deutsche Bank Americas Foundation

John H. & Ethel G. Noble Charitable Trust

Our Fund Foundation

The Steven & Alexandra Cohen Foundation

UJA - Federation of New York

\$25,000 – 49,999

Alphawood Foundation

Amazin' Mets Foundation

Broadway Cares/Equity Fights AIDS

CT Charitable Foundation

Isaac H. Tuttle Fund

Stavros Niarchos Foundation

Ted Snowdon Foundation

The David Bohnett Foundation

The Fan Fox and Leslie R. Samuels Foundation

The Jarvie Program

The John A. Hartford Foundation

\$10,000 – 24,999

Bank of America Foundation

Design Industries Foundation Fighting AIDS

FJC – A Foundation of Philanthropic Funds

Johnson Family Foundation

Louis and Anne Abrons Foundation, Inc.

MAC AIDS Fund

SeaChange

\$5,000 – 9,999

Anonymous

F.Y. Eye Inc

Grace J. Fippinger Foundation



Government

FEDERAL

Legislators

Rep. Suzanne Bonamici

Rep. Bobby Scott

Rep. Al Green

Rep. Barbara Lee

Senator Bob Casey

Senator Patty Murray

Senator Lisa Murkowski

Agencies

U.S. Department of Health and Human Services – Administration for Community Living

US Department of Housing and Urban Development

NEW YORK STATE

New York State Department of Health

New York State Office of the Aging

New York State Division of Veteran Affairs

New York State Office of Temporary and Disability Assistance

New York State Legislature

New York State Senators

Jabari Brisport

John Brooks

Brad Hoylman-Sigal

Rachel May

Gustavo Rivera

Luis R. Sepulveda

New York State Assemblymembers

Didi Barrett

Michael Blake

Harry Bronson

Phara Souffrant Forrest

Deborah Glick

Jessica González-Rojas

Richard Gottfried

Chantel Jackson

Ron Kim

Danny O'Donnell

NEW YORK CITY

New York City Department for the Aging

New York City Department of Health and Mental Hygiene

New York City Human Resources Administration

New York City Department of Veterans' Services'

New York City Council

New York City Council Members

Adrienne E. Adams, Speaker

Diana Ayala, Deputy Speaker

Keith Powers, Majority Leader

Shaun Abreu

Erik Bottcher

Justin Brannan

Tiffany Cabán

David Carr

Shahana Hanif

Kamillah Hanks

Robert F. Holden

Crystal Hudson

Chi Ossé

Kristin Richardson Jordan

Carlina Rivera

Lynn Schulman

Althea Stevens





FINANCIAL STATEMENTS

Condensed Statements of Financial Position

As of June 30, 2022 and June 30, 2021

	2022	2021
ASSETS		
Cash and Investments	\$ 15,041,341	\$ 13,757,863
Receivables and Pledges	9,844,413	8,502,728
Prepaid Expenses and Other Assets	444,054	838,515
Property & Equipment, Net	12,912,384	12,921,026
TOTAL ASSETS	\$ 38,242,192	\$ 36,020,132
LIABILITIES		
Payables and Accrued Liabilities	\$ 1,321,970	\$ 1,054,469
Loan Payable	7,386,356	7,581,753
Other Liabilities	448,505	887,135
TOTAL LIABILITIES	\$ 9,156,831	\$ 9,523,357
NET ASSETS		
Without Donor Restrictions	\$ 21,760,176	\$ 21,030,127
With Donor Restrictions	7,325,185	5,466,648
TOTAL NET ASSETS	\$ 29,085,361	\$ 26,496,775

Condensed Statements of Cash Flows

For the years ended June 30, 2022 and June 30, 2021

	2022	2021
Net cash provided by (used in) operating activities	\$ 2,261,891	\$ 8,135,103
Net cash provided by (used in) investing activities	(4,737,549)	(344,656)
Net cash provided by (used in) financing activities	(210,690)	(621,890)
Net increase (decrease) in cash and cash equivalents	(2,686,348)	7,168,557
Cash and cash equivalents at beginning of year	13,107,297	5,938,740
CASH AND CASH EQUIVALENTS AT END OF YEAR	\$ 10,420,949	\$ 13,107,297

Condensed Statements of Activities

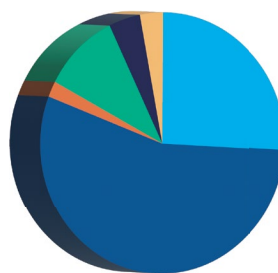
For the years ended June 30, 2022 and June 30, 2021

	2022	%	2021	%
SUPPORT AND REVENUE				
Government Grants and Contracts	\$ 5,210,729	26%	\$ 4,290,038	18%
Contributions Individuals and Foundations	10,870,523	55%	17,388,515	74%
Special Events (Net)	412,003	2%	62,823	0%
Bequests	1,933,817	10%	1,066,775	5%
Program Fees	700,927	4%	530,609	2%
Investment and Other Income	(7,640)	0%	69,368	0%
Donated Materials, Facilities and Services	548,365	3%	[New category in 2022]	
TOTAL SUPPORT AND REVENUE	\$ 19,668,724	100%	\$ 23,408,128	100%
EXPENSES				
Programs and Direct Services	\$ 13,656,939	79%	\$ 9,964,505	76%
Administration	1,960,836	11%	1,521,389	12%
Fundraising	1,757,944	10%	1,558,333	12%
TOTAL EXPENSES	\$ 17,375,719	100%	\$ 13,044,227	100%
CHANGE IN NET ASSETS	\$ 2,293,005		\$ 10,363,901	

SUPPORT AND REVENUE

Government Grants and Contracts	26%
Contributions Individuals and Foundations*	55%
Special Events (Net)	2%
Bequests	10%
Program Fees	4%
Investment and Other Income	0%
Donated Materials, Facilities and Services	3%

2022



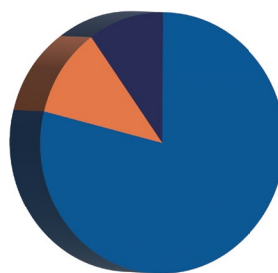
2021

Government Grants and Contracts	18%
Contributions Individuals and Foundations*	74%
Special Events (Net)	0%
Bequests	5%
Program Fees	2%
Investment and Other Income	0%
Donated Materials, Facilities and Services	N/A

EXPENSES

Programs and Direct Services	79%
Fundraising	11%
Administration	10%

Programs and Direct Services	76%
Fundraising	12%
Administration	12%



* Includes Donated Services and Memberships

sage | Advocacy &
Services for
LGBTQ+ Elders

We refuse to be invisible®

305 Seventh Avenue
15th Floor
New York, NY 10001
212.741.2247

sageusa.org
lgbtagingcenter.org
f t @sageusa